



# **Climate challenge in forests - Sweden vs Germany**

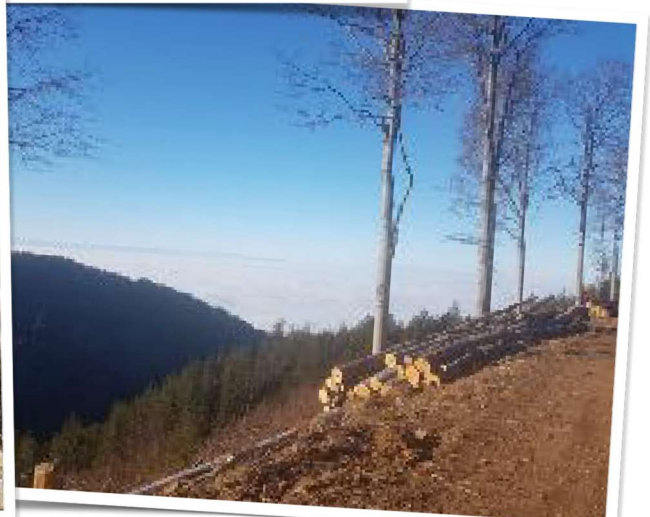
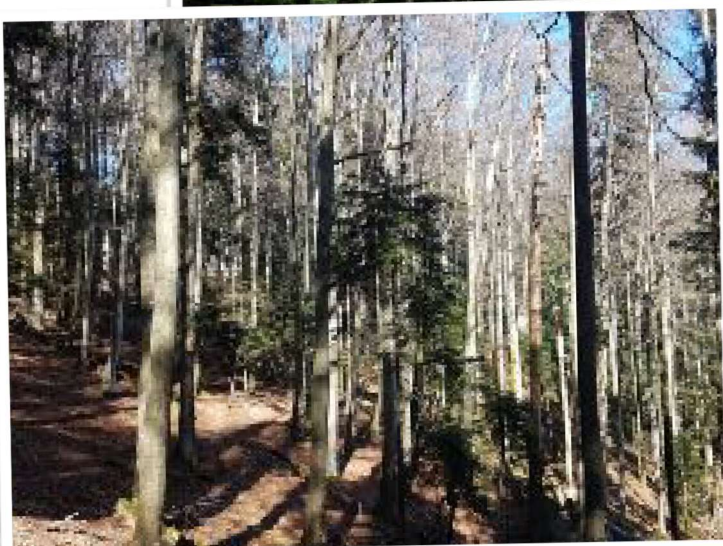
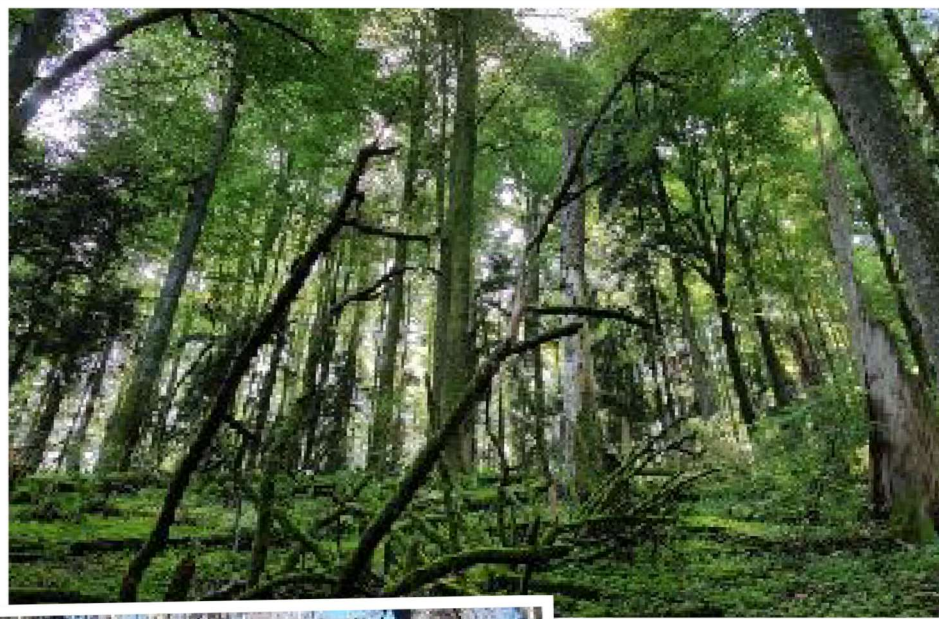
**Bus Sweden - Germany - Sweden**

**(28) 29/9 - 5/10 (6) 2024**

**Climate change, Forest Management, Knowledge exchange,  
Water & Society**

**Focus on future challenges & opportunities**

**Travel guides: Ida Wallin (SLU) & Jan Hedberg (Skogsresor)**



Join us on an excursion to Germany for an intensive knowledge exchange about climate challenges and possibilities for forests and forestry. Future Forests invites you to a full week excursion to have a look into the future and discuss the climate challenges that forestry is facing on the European continent and in Sweden.

The excursion will focus on knowledge exchange between the participants and our hosts in Germany regarding several different themes and topics. During a week we travel by bus through Germany and look at forests in Lübeck, the Harz mountains and in the area around Freiburg and the Black Forest. We discuss climate adaptation in forest management, water issues, close-to-nature forest management, integration of forest ecosystem services, and how to manage for nature conservation and recreation in densely populated areas.

**What will happen when the weather becomes warmer, drier, wetter and more extreme? Which opportunities do forestry and different actors have to contribute to resilient forests and societal benefits from forests?**

We travel in a comfortable Setra bus with efficient facilities for mini-lectures/TED talks, from computer to video screens in the bus. We use the transportation time in the bus for presentations, videos, discussions, and reflections on our visits.



**Main destination:** Freiburg im Breisgau, Baden-Württemberg with stops in Northern and central Germany on the way there and back.

**Topics:** Climate adaptation, resilient ecosystems in a changing climate, water, close-to-nature forestry, integrated multiple-use forestry, societal demands, and nature conservation.

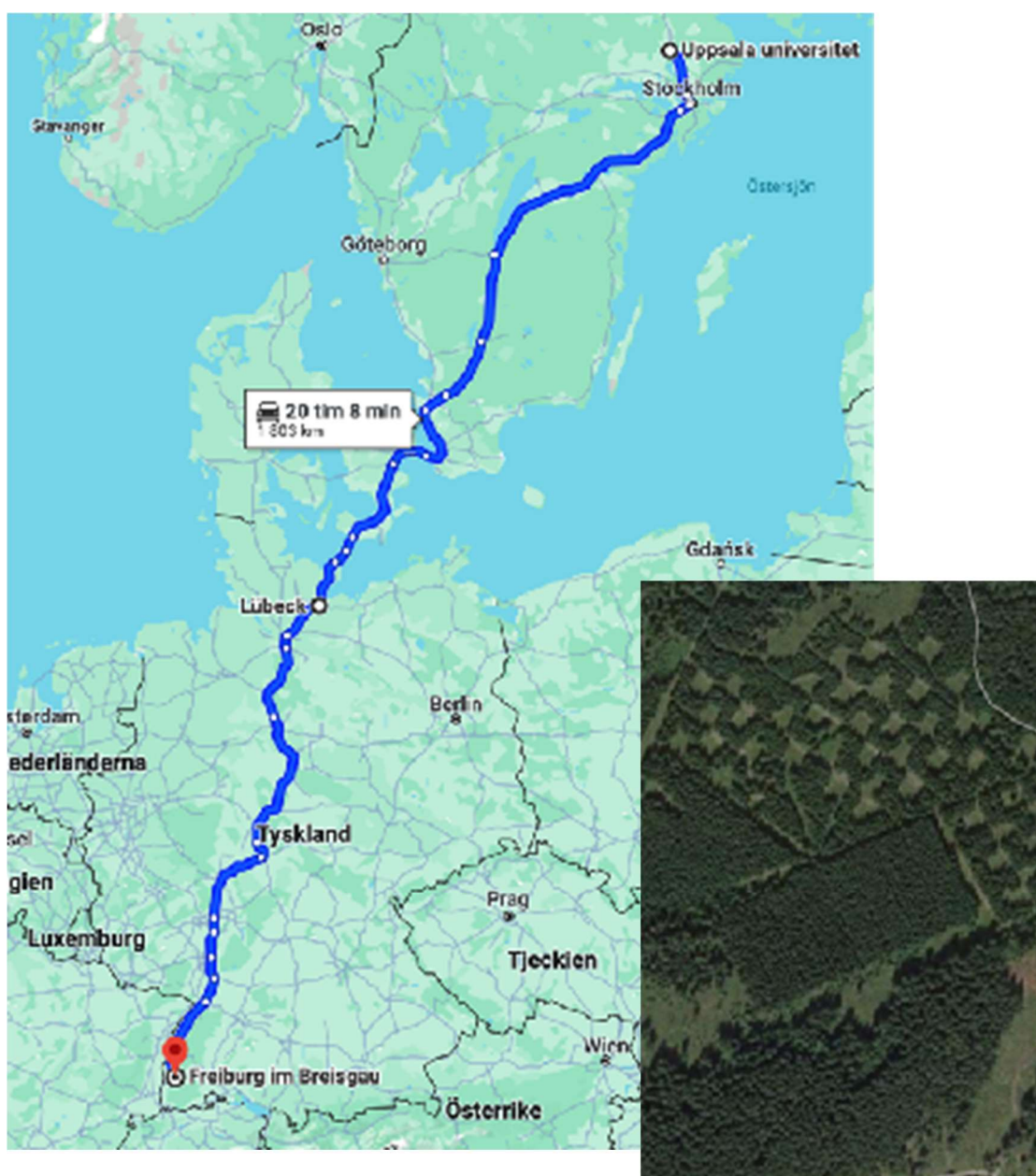
The trip is offered by Skogsresor in collaboration with SLU Future Forests. Skogsresor has a statutory travel guarantee and has conducted over 100 study trips to 30 countries.

Reservation for changes in the program due to considerations to hosts, driving times, weather etc. The order of days may be changed due to Brückentag/Bridge day on Oct 3. Definitive program day by day will be announced during June, but with the same content and start- and end-dates.

### Target groups:

- professionals in the forest sector and related industries including nature conservation and forest tourism
- researchers
- PhD students (a PhD course is linked to the excursion)
- forest owners
- Anyone with an interest in forestry

*Malmö - Freiburg incl. daytrips and visits along the way, ca 260-280 mil.*



**DAY 01, SATURDAY 28 SEPTEMBER 2024, SOUTHBOUND CONNECTION DAY PICK-UP ALONG UPPSALA-ARLANDA/STOCKH-JÖNKÖPING-MALMÖ**

The bus starts early in the morning and travels down through Sweden with possible pick-ups along the Uppsala-Arlanda-Stockholm-Jönköping-Malmö route. No meals are included this day. We stop for lunch and coffee at a suitable place on our journey south through Sweden. The connection day is billed as a separate item on the final invoice, see price later in the program. **D.**

**DAY 1, SUNDAY 29 SEPTEMBER 2024**

**MALMÖ-ÖRESUNDSBRON-RÖDBY-PUTTGARDEN-LÜBECK**

Starting the trip with departure after breakfast towards Denmark and over the Öresund Bridge to Rödbý for the ferry over to Puttgarden. Arrival in Lübeck in the afternoon or evening. Accommodation at our hotel before introduction to the "Lübeck Method" and dinner with speakers, representatives of the City Forests. The Lübeck method has become widely known around Europe as a good practice example of close-to-nature forestry where valuable timber (usually oak) is extracted when it has reached its target diameter and where high economic, social, and ecological values are created. In 2023, however, there were major changes in the management of the city forests, and it will be interesting to see if the city will continue on the same path or if the new organization will switch to a different type of forestry. Breakfast for those staying at Scandic, own lunch on the boat or at stops along the way. Dinner together.



**DAY 2, MONDAY 30 SEPTEMBER 2024**

**FOREST EXCURSION IN LÜBECK CITY FOREST, SOUTHBOUND ON THE AFTERNOON OR EVENING**

Half-day excursion in the city forests of Lübeck with various visiting points. Field lunch before we drive further south in the afternoon towards our main destination in southern Germany. We summarize and discuss the impressions from the day in Lübeck during our bus ride. Dinner at a suitable place along the autobahn/highway, overnight stay in the vicinity of Göttingen. B/L.



**DAY 3, TUESDAY 1 OCTOBER 2024 GÖTTINGEN - BADEN BADEN -  
FREIBURG LECTURE AND DISCUSSIONS, NATIONAL PARK  
NORDSCHWARZWALD.**

After breakfast we leave the hotel for a day of transportation South through Germany. With the help of bus technology and wireless microphone we use the time for lectures, videos, recordings and discussions in the bus. Lunch along the autobahn/highway. If the logistics work well, we will make a stop in the forests north of Freiburg and get to stretch our legs and familiarize ourselves with the Black forests. The only national park in Baden-Württemberg is just over 10,000 ha and has been controversial since its start in 2014.



The goal is to leave large parts of the park for free development despite major bark beetle infestations which, according to locals, has spread to the private forests surrounding the park. Wildlife management has also led to major conflicts with neighbors. At the same time, the park is a tourist magnet with great natural values that are threatened by a warmer climate. We discuss nature conservation in areas with a long history of intensive use and the need to potentially restore biodiversity. Which objectives should be promoted?

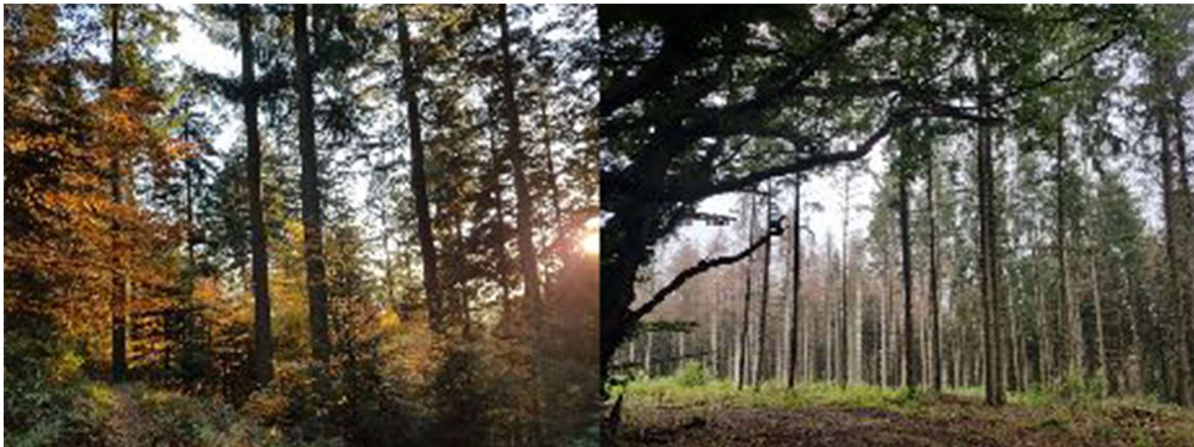
Late afternoon and evening check-in at our hotel in Freiburg where we will stay for three nights. Walk and orientation tour around the city for those who wish. Dinner after own choice. B.

#### **DAY 4, WEDNESDAY, OCTOBER 2, 2024**

##### **FREIBURG-DONAUESCHINGEN, Fürstenberg Forst, Freiburg University, FVA**

Presentation of their private and commercial near-natural screen forestry. Much of the forest in the Black Forest was cleared after the Second World War and planted with spruce. 90% of Fürstenberg Forst's forests consist of spruce, but the aim is to increase the share of other tree species, especially Douglas fir, which grows quickly and has valuable timber. The focus here is on discussing the economic aspects of close-to-nature forestry and the conditions that need to be in place.

We continue with visits and meetings with researchers from Freiburg University and FVA focusing on forest management, forest planning and policy, environmental communication, and forest pathology. All give their views on the future of forest management in Germany and Central Europe. Dinner with hosts in Freiburg. B/L/D.



#### **DAY 5, THURSDAY, OCTOBER 3, 2024**

##### **FREIBURG - OBERRIED/TODTNAU, Theme - small-scale private forestry**

We visit a so called Plenterwald forest and talk about continuous cover forestry on private land and how to switch from single-layer to multi-layer forests. We also visit Wilhelmstal in Oberried municipality/district and the forests there, which are partly public and partly state forests managed by ForstBW, which manage according to close-to-nature principles with requirements on financial return. We discuss the various ecological, economic, and technical conditions for sustainable forestry in the future with climate change already evident here.

In the evening there is the opportunity to discover Freiburg city in a group or on your own and try one of the city's two central breweries, Feierling & Martinsbräu, or one of many restaurants. B/L.



**DAY 6, FRIDAY, OCTOBER 4, 2024**  
**FREIBURG CITY FOREST - HARZ NP/  
FORESTS -BRAUNLAGE/TORFHAUS**

Together with the forester of Freiburg's own forests, we talk about climate protection as a political and management goal. We visit the peri-urban forests where they are working on the integration of exotic tree species to create residences and view the newly built office with several innovative wooden elements from their own forests.



We drive North towards the Harz mountains and Brocken forests. We again make use of the technology in the bus for reflections and discussions. Lunch at a suitable place along the autobahn. Late afternoon we drive into a new forest area, Harz Naturpark. In the border forests between the former West and East Germany, drought and the spruce bark beetle have hit particularly hard in recent years, resulting in large-scale clear-cutting. This has led to a debate about what forestry practices are really needed in a changing climate. We receive an evening lecture on the topic from Dr. Hendrik Rumpf at Niedersächsische Landesforsten. Dinner at the accommodation. B/D.



**DAY 7, SATURDAY 5 OCTOBER 2024**  
**HARZ FORESTS - DENMARK – MALMÖ**

After breakfast and possibly a short forest stop, we continue North towards Puttgarden - Rödbý and further on to Malmö where we arrive in the evening. The trip ends and those who want and wish can stay at the same hotel in Malmö where we started our trip. Lunch at a suitable place along the way. We summarize and discuss the days together before arriving late evening in Malmö. B.

**DAY 09, SUNDAY 6 OCTOBER 2024, NORTHBOUND RECONNECTION**  
**DAY DROP-OFFS ALONG MALMÖ-JÖNKÖPING-UPPSALA-  
ARLANDA/STOCKHOLM**

The bus takes the same route North as on Saturday, September 28. Arrival Arlanda/Uppsala late evening. Breakfast for the ones living at Scandic.

### Prices and booking conditions (including 2.67% VAT)

Preliminary price: 13.000 SEK per person in a double room. Calculated for 45 travelers in total.

Single room additional fee: 3.000 SEK per person

Connecting bus through Sweden (south- and northbound bus) including hotel nights 28 Sept and 6 Oct: 1000 SEK/night in double room, 1500 SEK/night in single room.

[Booking and questions: sharp registration requires paid registration fee 2500 SEK/person to BankGiro 5251-4908 and completed registration form, see skogsresor.se and last page of this program or contact Jan 070-671 72 22, jan@skogsresor.se](#)

[Last registration day 20240620 \(preliminary\)](#)

### Included in the price

- Travel in comfortable Setra long-distance bus Malmö-Freiburg and Freiburg-Malmö
- Accommodation (hotel)
- Meals according to program: Breakfast/Lunch/Dinner= B/L/D
- Entrances according to program
- Hospitality according to program
- Travel compendium
- Tour guidance by Ida Wallin & Jan Hedberg

### Price does not include:

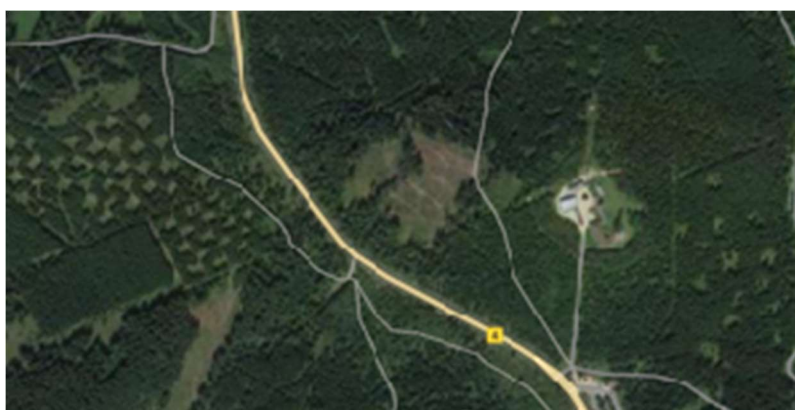
- Single room
- Drinks with tips at included meals
- Tips for hotel staff, bus driver (total approx.. 2-250 kr/pers)
- Travel and cancellation insurance

### Price is based on:

General travel conditions, see also registration form (last page). Reservation for price changes due to exchange rates, number of travelers and taxes and fees. Unfortunately, we cannot pay for the trip by credit card due to increased costs for us with this handling. We recommend payment over the web with an account where you have a debit card for good conditions on bank cards.

### Contact information

[Ida Wallin](#), Researcher  
[SLU, Southern Swedish Forest Research Centre](#)  
[ida.wallin@slu.se](mailto:ida.wallin@slu.se),  
+46761353349







## **Practical information**

### **Passport and other documents**

A valid passport or Swedish international ID card is required for the trip. The passport or ID card must be valid until the date of return. A visa is not required.

### **Health care/Vaccinations**

No vaccinations are required for the trip, but we advise all our travelers to be up-to-date on TBE (tick vaccine), polio, diphtheria and tetanus.

Contact your local health center for current advice from Swedish authorities. Bring a small travel pharmacy including mosquito/tick repellent and any regular personal medications. Medications taken regularly should be carried in your hand luggage. We recommend bringing disinfectant spray or gel for good hand hygiene. We will have hand sanitizer at the entrance/exit of the bus. We have medical knowledge, nurse, heart defibrillator and some medical equipment with us throughout the trip.

### **Currency**

The currency in Germany is Euros, which can be purchased in Sweden or withdrawn from an ATM while travelling. Remember that bank cards with regional restrictions must be opened for use in Europe. Credit cards cannot always be used for purchases in Germany. VISAdebit works well but otherwise it is recommended to always have some cash on hand for both restaurants and small shops.

### **Meals**

The program for the trip shows which meals B/L/M are included in the price of the trip. Other meals are to be arranged by the travelers individually or in groups. The tour guides will help you with tips of restaurants. Make sure you have enough water to drink. Feel free to carry a water bottle in your day bag. Tap water is fine to drink in Germany.

### **Telephone number**

To call Germany, the country code is +49. From abroad to Sweden, dial +46, then the number as usual without the first zero. Swedish mobile phones work well in the EU and roaming is often the same price as at home (check with your phone company to be sure). Wi-Fi is available in hotels, railway stations and some cafés and restaurants.

### **Travel insurance**

Please check that you have a travel insurance to cover your needs during the trip. All participants must have travel insurance. A good, affordable travel insurance policy is to supplement your home insurance (which includes some travel insurance) with a supplementary insurance policy. With most insurance companies, this applies to all persons registered at the same address for a whole year. If you want extra protection, European ERV sells travel insurance at a slightly higher price level.

Please note that we cannot accept credit cards for payment of the final invoice for this trip due to increased costs that we have to add to the price of the trip.

### Temperature/clothing

It is normally a bit warmer in these areas than in Sweden and we should plan for warm autumn weather. It can be good to have clothes for chilly evenings and possible rain during field visits. Remember good shoes, boots, and forest clothes for the field days and a "day-backpack". A small umbrella in your pocket can be useful.

### Luggage

We will be staying in hotels/motels/hostels, so a suitcase is best for easy packing in the bus. No weight restriction. Hand luggage that can serve as a daypack with rain clothes, small umbrella, water bottle and personal equipment, medications.

### Health and mobility

The trip is planned with walking sections in forest terrain and not very demanding terrain.

Further practical and detailed information will be updated and emailed to all applicants well before departure...



### Preliminary bus times for the connection day on Saturday 28 Sept:

08.00 Uppsala central station  
08.30 Arlanda  
ca 13.00-30 Jönköping Lunch stop  
ca 14.00-30 Departure Jönköping  
ca 19.00 Arrival Hotel Malmö

### Preliminary bus times for the connection day on Sunday 6 Oct:

ca 08.00 Departure Malmö  
ca 11.30 Jönköping  
Lunch stop along the way 45 min  
ca 16.30 Arlanda  
ca 17-18 Uppsala

Booking/Sharp registration = 2500 SEK/person to Bg 5251-4908, mark with your full name and Future Forest Germany. Send to Skogsresor, Kampåkern 100, 864 92 Matfors.

## ANMÄLNINGSBLANKETT för SKOGSRESOR

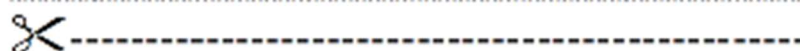
Vänligen fyll i blanketten, ange önskemål samt blifogs en kopia på passets fotosida.

Skogsföretag/förening:	Resmål/Land:	Avresedatum:	Resoleddare:
------------------------	--------------	--------------	--------------

Namn: (Samliga förnamn enligt passet + efternamn)	
Adress:	
Postnummervärd:	
Födelsedatum: År –mån–dag, skågt!	
Telefon privat:                      arbete:	
Passnummer: (skall vara giltigt 6 mån efter hemkomsten)	
Giltigt till:	Uteställningsort:
Jag vill flyga från: (flygplats) Arlanda – Köpenh – Göteborg – Oslo	
E-mal:	
Jag vill dela dubbelrum med:	
Jag vill ha enskilt rum med tillgång: <input type="checkbox"/>	

Namn: (Samliga förnamn i passet + efternamn)	
Adress:	
Postnummervärd:	
Födelsedatum: År –mån–dag, skågt!	
Telefon privat:                      arbete:	
Passnummer: (skall vara giltigt 6 mån efter hemkomsten)	
Giltigt till:	Uteställningsort:
Jag vill flyga från: (flygplats) Arlanda – Köpenh – Göteborg – Oslo	
E-mal:	
Jag vill dela dubbelrum med:	
Jag vill ha enskilt rum med tillgång: <input type="checkbox"/>	

Övrig information/Sjukdomar/Mediciner:.....



### ANMÄLNINGSREGLER:

#### 1 ANMÄLAN

Anmälan sker skriftligt via detta formulär samt genom insättning av anmälningsavgift på Bg: 5251-4908, Skogsresor AB. Anmälningsavgiften är 2500 kr för samtliga resor. Observera att antalet platser på resorna är begränsat. Anmälan gäller först då både pengar och ovanstående anmälningsblankett sänds in till Skogsresor c/o Jan Hedberg.

#### 2 ANMÄLNINGSFRIST

Det är en förutsättning att anmälan sker så tidigt som möjligt. Om andra bestämmelser gäller anges det i det aktuella programmet. Sena anmälningar tar vi emot men då via direktkontakt för att höra om lediga platser. Tidiga anmälningar försäkrar tillräckligt många deltagare så att resan kan genomföras. Sena anmälningar skapar osäkerhet och kan riskera att resan ställs in.

#### 3 INSTÄLLD RESA AV ARRANGÖR

En gruppresa med färre än 20 deltagare kan ställas in. Det kan också ske om andra avgörande orsaker gör att resan inte kan genomföras. Anmälda resenärer får då erbjudande om en annan resa eller pengarna tillbaka. Inställda resor meddelas skriftligt i personligt brev direkt till deltagarna, senast 2 veckor före avresan.

#### 4 AVBESTÄLLNING

##### INSTÄLLD RESA VID FORCE MAJEURE

(ställs in av resorangeren)  
Arrangören ställer in resan om det på resmålet eller i dess omedelbara närhet 14 dagar innan avresa konstateras ång naturkatastrofer, krig, smittsamma sjukdomar eller andra liknande händelser och att det är en risk att det kommer att föregå under resans gång. Vid inställd resa ges ovanstående orsaker återbetalas i bestämda pengar enligt avbeställnings-skydd.

**RESENÄREN KAN DÖCK INTE AVBESTÄLLA RESAN OM DET VISAR SIG ATT OVANSTÄNDE ORSAKER VAR KÄNDA ELLER BORDE VART DET I BESTÄLLNINGSSÖMBLICKET.**

##### VID AVBESTÄLLNING AV ANDRA ORSAKER ÄN VID FORCE MAJEURE ÅTERBETALAS:

Tid innan avresa	Återbetalningsbelopp
3 månader – 46 dagar	Anmälningsavgift
45 – 31 dagar	50% av resans pris
Minst 30 dagar	Hela resans pris

#### AVBESTÄLLNINGSSKYDD

Vi uppmanar alla resenärer att teckna avbeställnings-skydd. Det kan göras hos ditt försäkringsbolag. Se till försäkringar 0771-119113 eller Europiska EHV 0770-457971. Du säger både avbeställningsskydd och resoförsäkringar. Det är resenärens ansvar att skaffa avbeställningsskydd. Vid avbeställning måste utskända biljetter återbetalas eller annan återbetalning ske.

#### 5 FÖRSÄKRINGAR

Alla resande uppmanas att skaffa reseförsäkring. Vi hänvisar till Suld försäkringar 0771-113113 eller internetet Europeiska ERY 0770-452971. De säljer både arbetsställningsolycka och reseförsäkringar. Kontrollera även med din hemförsäkring om eventuella tilläggsmöjligheter. Det är resandens ansvar att skaffa dem försäkringar som önskas.

#### 6 ÄNDRING AV PRIS

Priset är baserat på 50 betalande resenärer och rådande valutakurser vid utgåvan av programmet. Arrangören förbehåller sig rätten att ändra resans pris beroende av antal resenärer, ändrade valutakurser i USD, NDK, flyg- och transportavgifter samt oljeprisutveckling och avgifter som vi inte får övers.

#### 7 BETALNINGSVILLKOR

Om ca 4 veckor innan avresan får deltagarna sluträkningen. Resedokument och biljetter görs klara när vi mottagit betalningen. På sluträkningen dras anmälningsavgiften av.

#### 8 GENERELLA VILLKOR

Vi hänvisar till Svensk reseregistret.

Skogsresor har förbehållande om sitt uppdrag om kan ändras innan avtal ingås.

#### 9 OMBOKNINGSKOSTNADER

Vid ombokning av resedatum som skiljer sig från gruppen, vid ändringar av uppgifter eller tilläggsbokningar av flyg och boende ligger en självkostnadsavgift ut för merarbete.

**Anmälningsreglerna behålls av resenären.**

.....  
.....

**Kom ihåg att bifoga en kopia på passets  
fotosida när du skickar in anmälan!**



ANMÄLNINGSBLANKETTEN SÄNDS TILL:

**SKOGSRESOR  
Kampåker 100  
864 92 MATFORS  
SVERIGE**